

innuos



PULSE

Quick Start Guide

Thank you for buying our **PULSE** Network Music Player and welcome to the Innuos family!

This **Quick Start Guide** will show you how to get started with your new music player.

For further details, troubleshooting and help with advanced setups, visit our support page at <https://innuos.com/support/>.

At **Innuos**, we appreciate your feedback. Once you download and start using our **Sense** app to play your music, we encourage you to register at our **Feedback Zone** at <https://feedback.innuos.com/> where you can help shape future software development by providing your thoughts and feature requests.

You can also join us on social media to keep informed about events, new features and products here:



facebook.com/innuos

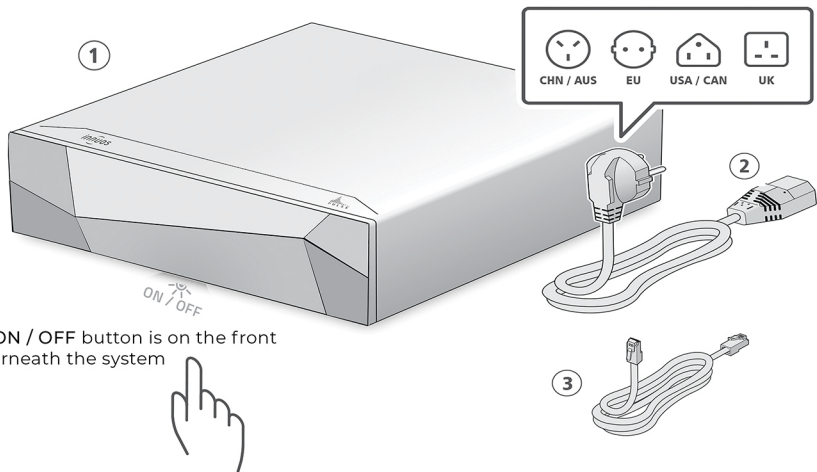


instagram.com/innuos



twitter.com/Innuos

Enjoy the music,
The Innuos Team



The ON / OFF button is on the front underneath the system



1. Innuos **PULSE** Network Music Player
2. Mains Power Cable
3. 2m Ethernet Cable

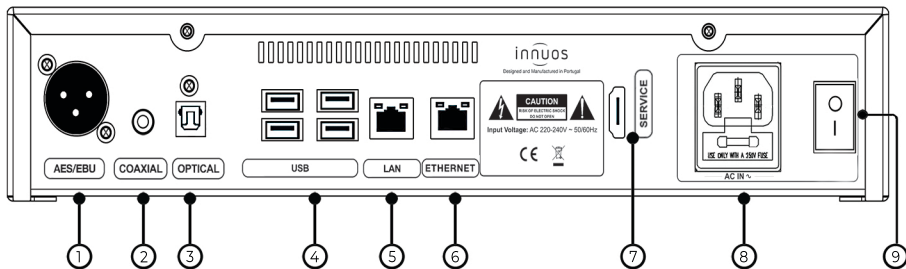


* To turn off the **PULSE**, press the ON / OFF button once and wait 1 - 2 seconds to shutdown.

* Do not hold ON / OFF button down.



PULSE Rear Panel Diagram



- 1. AES/EBU Output
- 2. Digital Coaxial Output
- 3. Digital Optical Output
- 4. 4x USB 3.0
- 5. Ethernet input from Router
- 6. Ethernet AUX
- 7. HDMI Output (service only)
- 8. Mains Power Input
- 9. Mains Power Switch

To get started, download the Innuos **Sense** app at the following stores:



You can also access our Innuos **Sense**

app using a modern browser at:

my.innuos.com